



# NTWKR

## Northern Territory Women's Keelboat Regatta

15<sup>th</sup> and 16<sup>th</sup> August 2020

### SAILING INSTRUCTIONS

Issued 12<sup>th</sup> August 2020

**The Organising Authority is the Darwin Sailing Club (DSC)**



#### 1 RULES

- 1.1 The races will be governed by the rules as defined in *The Racing Rules of Sailing (RRS)*.
- 1.2 The Australian Sailing Special Regulations Part 1, Sections 1 - 6, shall apply for Keelboats.
- 1.3 The ORC Rule where applicable.
- 1.4 The Australian Sailing Keelboat Handicap Rule (PHS) where applicable.
- 1.5 The Sportsboat Measurement System (SMS) where applicable.

#### 2 NOTICES TO COMPETITORS

Notices to competitors will be posted on the official notice board located adjacent to the Members Bar.

#### 3 CHANGES TO SAILING INSTRUCTIONS

Any change to the sailing instructions will be posted not less than two hours before it will take effect, except that any change to the schedule of races will be posted by 1800 hours on the day before it will take effect.

#### 4 SIGNALS MADE ASHORE

- 4.1 Signals made ashore will be displayed on the flag mast situated on the DSC lawn and may be replicated on the rigging lawn flagpole.
- 4.2 When flag AP is displayed ashore, '1 minute' is replaced with 'not less than 1 hour' in the race signal AP for Keelboats.

#### 5 SCHEDULE OF RACES

The Schedule of Races will be:

Date	Number of Races	First Warning Signal
Sat 15 August	3	1005hrs
Sun 16 August	2	0955hrs



## 6 CLASS FLAGS

6.1 Division flags will be:

Division 1	Small Keelboats	S80	Numeral 1
Division 2	Sports Boats	Elliott 7	Numeral 2
Division 3	Large Keelboats	Mixed	Numeral 3

## 7 RACING AREAS

7.1 Racing will be on the waters of Fannie Bay. See Appendix B.

## 8 THE COURSES

8.1 The Race Committee shall designate the course to be sailed before or at the warning signal for the class by displaying a course reference on a board on the Committee Signal Boat corresponding to the course reference in Appendix A (attached).

8.2 All marks of the course are rounding marks.

## 9 MARKS

9.1 Laid Marks are described in Appendix A.

9.2 Fixed Marks are described as follows:

Name	Approximate Position		Description
D Buoy	12° 26.100' S	130° 49.200' E	Yellow buoy
E Buoy	12° 25.560' S	130° 48.800' E	Yellow buoy
F Buoy	12° 25.52' S	130° 48.11' E	Yellow buoy
O Buoy	12° 24.30' S	130° 48.250' E	Yellow buoy
Submarine (SM)	12° 28.02' S	130° 47.58' E	Stbd Lateral Buoy
No. 6	12°25.051'S	130°46.965'E	Port Lateral Buoy
No. 7	12°26.073'S	130°46.823'E	Stbd Lateral Buoy

## 10 THE START

10.1 The start will be a line between an orange cylindrical 'pin' buoy and the mast of the committee start boat, identified by an orange flag, in the vicinity of D Buoy.

10.2 A boat starting later than 5 minutes after her starting signal will be scored DNS without a hearing. This changes rule A4, 30 & 35.



## 11 THE FINISH

- 11.1 The finish will be a line between a black and white buoy and the mast of the committee boat, identified by a blue flag, in the start vicinity.
- 11.2 A distance mark may be attached to the Committee Signal Boat. When laid, this mark shall be considered an extension of the Committee Signal Boat.

## 12 TIME LIMITS

- 12.1 The time limits are as following:

Windward Leeward Triangle	60 minutes
Windward Leeward	60 minutes
Harbour Course	180 minutes

- 12.2 All competitors to finish within 20 minutes of the 1<sup>st</sup> finisher from each Division.
- 12.3 Any boat that has not finished within the time limit will be scored Did Not Finish without a hearing. This changes rules 35, A4 and A5.

## 13 PROTESTS AND REQUESTS FOR REDRESS

- 13.1 Protest and Requests for redress forms are available at the DSC Sailing Office (tower).
- 13.2 Protests and requests for redress or reopening shall be delivered to the DSC Sailing Office, within the appropriate time limit.
- 13.3 The protest time limit is 120 minutes (2 hours) after the last boat has finished the last race of the day or the race committee signals no more racing today, whichever is later.
- 13.4 Notices will be posted no later than 30 minutes after the protest time limit to inform competitors of hearings in which they are parties or named as witnesses. Hearings will be held in the DSC Committee room, beginning at the time posted.
- 13.5 Notices of protests by the race committee or protest committee will be posted to inform boats under rule 61.1(b).

## 14 SCORING

- 14.1 Five (5) races are scheduled of which three (3) races are required to be completed to constitute a series.
- 14.2 When three (3) races have been completed, a boats series score will be the total of her race scores.
- 14.3 When four (4) or more races have been completed, a boats series score will be the total of her race scores excluding her worst score.



## 15 SAFETY REGULATIONS

- 15.1 The event is Category 7 for safety purposes. Safety declarations are required to be submitted to the DSC Sailing Office, if not already provided.
- 15.2 Where a Safety Category has been designated in the DSC Sailing Program, all competing boats shall lodge a Safety Compliance Declaration and Checklist covering the appropriate safety category prior to racing. Boats failing to comply will have their entry refused.
- 15.3 In addition to the requirements of the designated Safety Category, the follow additions apply to all keelboats:
  - a) All keelboats shall carry a VHF radio capable of transmitting on channels 16 & 73. The radio may be permanently installed or a waterproof handheld.
  - b) Keelboats competing as Cat 7 on a boat without lifelines complying with AS Special Regulations Part 1, Section 3.12 (e.g. Elliotts) - lifejacket must comply with AS Special Regulations Part 2, Section 5.01.2 (minimum 50S).
- 15.4 All boats are required to sign on and off the water each race day by answering a roll call on VHF Ch.73 approximately 20 minutes before the first warning signal for the day. Failure to comply with this rule will result in the boat being scored DSQ without a hearing.

## 16 EQUIPMENT AND MEASUREMENT CHECKS

A boat or equipment may be inspected at any time for compliance with the class rules and sailing instructions. On the water, a boat can be instructed by a race committee equipment inspector or measurer to proceed immediately to a designated area for inspection.

## 17 RADIO COMMUNICATION

- 17.1 Except in an emergency, a boat shall neither make radio transmissions while racing nor receive radio communications not available to all boats. This restriction also applies to mobile telephones.
- 17.2 DSC Race Control will monitor and use VHF Channel 73 during races.
- 17.3 It is recommended that all boats monitor/transmit on VHF Channels 73 and 16.

## 18 COMMERCIAL SHIPPING

- 18.1 Marine regulations require that boats shall avoid commercial shipping. Boats which find themselves in danger of interfering with commercial shipping may use their engine to avoid interference and will not be penalised under RRS 42 provided that:
  - a) it is used only as necessary to avoid the commercial shipping in question,
  - b) no advantage is gained through its use, and
  - c) a declaration containing a complete description of the circumstances is submitted to the Race Committee within the protest time limit.
  - d) This alters RRS 42.



18.2 Skippers are reminded of the requirement for competing boats to keep clear of commercial shipping at all times. Boats should not cross commercial shipping channels where such crossing would interfere with the passage of commercial shipping or be so close as to cause concern for commercial shipping.

18.3 Check the schedule here <https://portinfo.darwinport.com.au/webx/#>

## 19 PRIZES AND TROPHIES

19.1 Prizes will be presented at 1800 Sunday 16th August 2020.

19.2 Trophies & medals will be awarded as follows:

NT Women's Keelboat – Sports Boat Division	1 <sup>st</sup> place in Elliott fleet
NT Women's Keelboat – Small Keelboat Division	1 <sup>st</sup> place in S80 fleet
NT Women's Keelboat – Large Keelboat Division	1 <sup>st</sup> place in Mixed fleet

19.3 Additional prizes may be awarded at the discretion of the organising authority.

## 20 DISCLAIMER OF LIABILITY

Competitors participate in the regatta entirely at their own risk. See rule 4, Decision to Race. The organizing authority will not accept any liability for material damage or personal injury, or death sustained in conjunction with or prior to, during, or after the regatta.

## 21 MEDIA RIGHTS

By participating in these races, competitors automatically grant to Darwin Sailing Club and its sponsors, the right in perpetuity to make, use and show, from time to time at their discretion, any photographs, motion pictures and live, taped or filmed television and other reproductions of the competitor during the period of the races without compensation.

## 22 INSURANCE

Each participating boat shall be insured with valid third-party liability insurance with a minimum cover of AUD \$10 Million per incident or the equivalent and maintain this cover for the period of the series. If a boat fails to maintain her insurance during the series, she shall be deemed to be ineligible and scored DNC for each race until her insurance is restored.



## APPENDIX A – COURSES

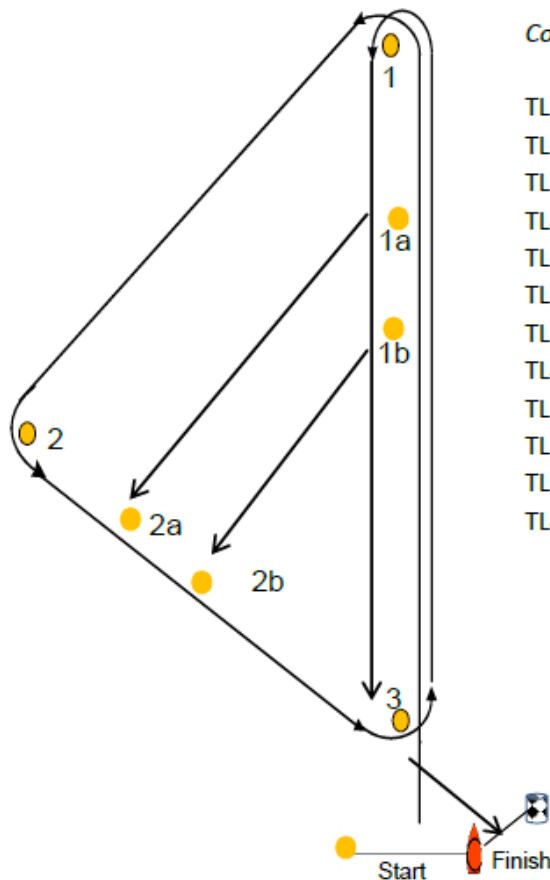
Courses will be selected from:

- a) Windward/Leeward or Windward/Leeward Triangle – as per diagrams in this publication, and
- b) Harbour Courses by number described below

Course Ref.	Harbour Course
12	Start - a(p/s) - SM(s) - No.7(s) - No.6(s) - E(s) – Finish. (8.5nm)
13	Start - a(p/s) - E(p) - No.7(s) - E(s) - (Finish). (5.7nm)
14	Start - a(p/s) - E(p) - No.6(p) - No.7(s) - No.6(s) - E(s) – Finish. (7.3nm)
29	Start – a(p/s) – E(s) – O(p) – 6(p) – E(s) – Finish. (6.25nm)
30	Start – a(p/s) – E(s) - O(p) - F(p) - E(s) – Finish. (4.8nm)



## Windward-Leeward- Triangle



**Course:**

*Triangular - Downwind finish*

*Mark rounding order*

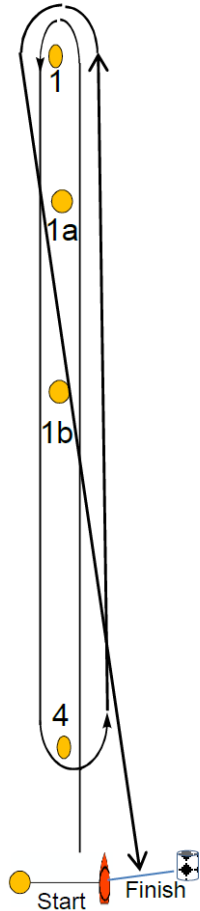
TL1	Start - 1 - 2 - Finish
TL2	Start - 1 - 2 - 3 - 1 - Finish
TL3	Start - 1 - 2 - 3 - 1 - 3 - 1 - 2 - Finish
TL4	Start - 1 - 2 - 3 - 1 - 3 - 1 - 2 - 3 - 1 - Finish
TL1a	Start - 1a - 2a - Finish
TL2a	Start - a1 - 2a - 3 - 1a - Finish
TL3a	Start - 1a - 2a - 3 - 1a - 3 - 1a - 2a - Finish
TL4a	Start - 1 a - 2a - 3 - 1a - 3 - 1a - 2a - 3 - 1a - Finish
TL1b	Start - 1b - 2b - Finish
TL2b	Start - 1b - 2b - 3 - 1b - Finish
TL3b	Start - 1b - 2b - 3 - 1b - 3 - 1b - 2b - Finish
TL4b	Start - 1b - 2b - 3 - 1b - 3 - 1b - 2b - 3 - 1b - Finish

<i>Mark</i>	<i>Description</i>
1	Orange cylindrical buoy
1a	Orange & white cylindrical buoy
1b	Orange & black cylindrical buoy
2	Orange cylindrical buoy
2a	Orange & white cylindrical buoy
2b	Orange & black cylindrical buoy
3	Orange & blue cylindrical buoy
Port start mark	Orange cylindrical buoy
Starboard start mark	Committee boat mast
Starboard finish mark	Committee boat mast
Port finish mark	Black & white cylindrical buoy



## Windward-Leeward

*Course: Windward - Leeward - Downwind finish*  
*Mark rounding order*



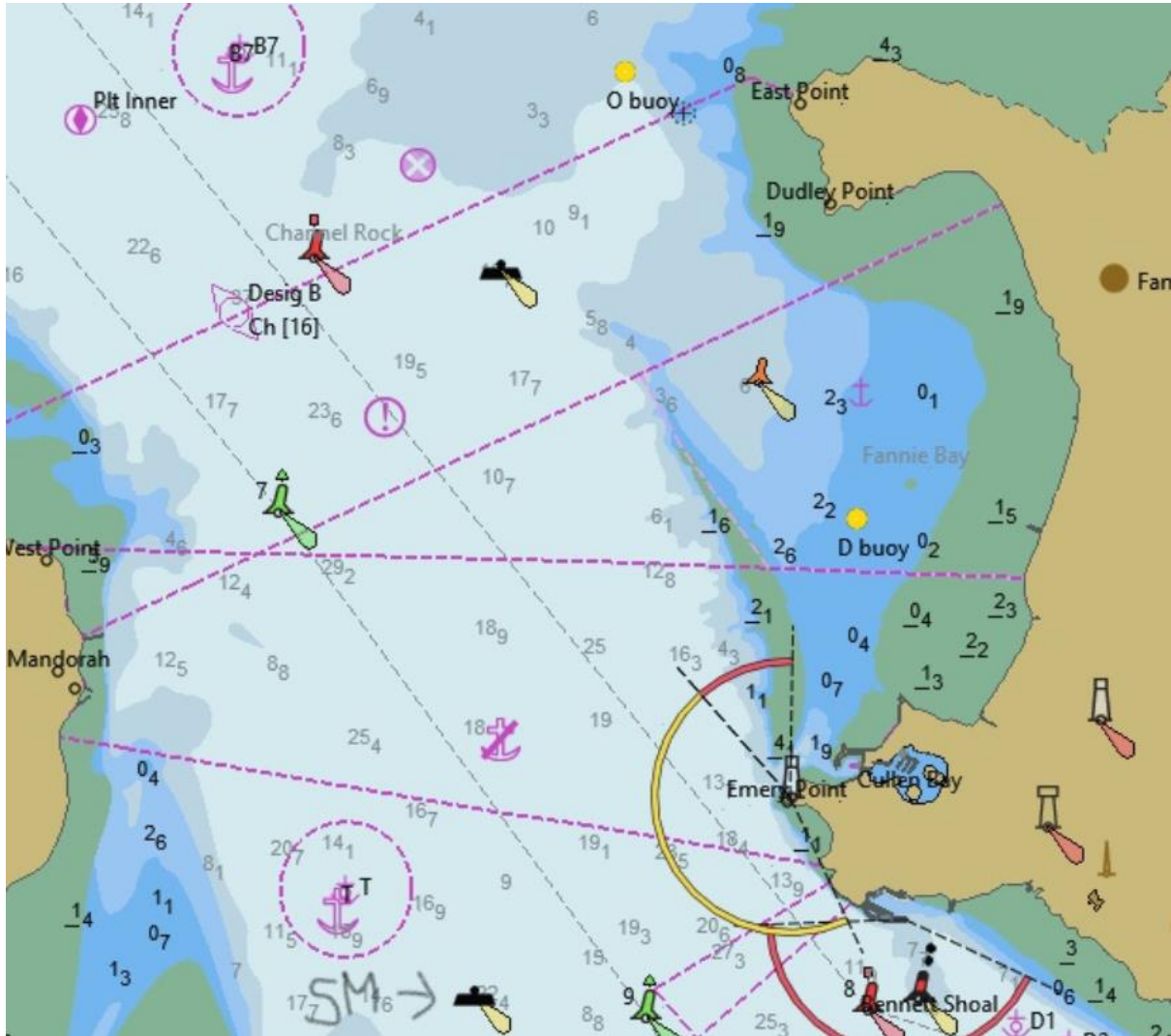
L1	Start - 1 - Finish
L2	Start - 1 - 4 - 1 - Finish
L3	Start - 1 - 4 - 1 - 4 - 1 - Finish
L4	Start - 1 - 4 - 1 - 4 - 1 - 4 - 1 - Finish
L1a	Start - 1a - Finish
L2a	Start - 1a - 4 - 1a - Finish
L3a	Start - 1a - 4 - 1a - 4 - 1a - Finish
L4a	Start - 1a - 4 - 1a - 4 - 1a - 4 - 1a - Finish
L1b	Start - 1b - Finish
L2b	Start - 1b - 4 - 1b - Finish
L3b	Start - 1b - 4 - 1b - 4 - 1b - Finish
L4b	Start - 1b - 4 - 1b - 4 - 1b - 4 - 1b - Finish

<i>Mark</i>	<i>Description</i>
1	Orange cylindrical buoy
1a	Orange & white cylindrical buoy
1b	Orange & black cylindrical buoy
4	Orange & blue cylindrical buoy
Port start mark	Orange cylindrical buoy
Starboard start mark	Committee boat mast
Starboard finish mark	Committee boat mast
Port finish mark	Black & white cylindrical buoy





## APPENDIX B Racing Area (not for navigation)



## APPENDIX C - USEFUL PHONE NUMBERS

Darwin Sailing Club	08 8981 01700
Water Police	13 14 44
Police, Fire, Ambulance	000
Darwin Police	08 8901 0208
Race Officer (Ed Vincent)	0417 520 591