

# 2020 Garmin/ Navcom CLASSIC SERIES

## OLD MAN ROCK

### Sailing Instructions

See General Sailing Instructions also

**30 August 2020**

**First Start: 1300**

#### Safety:

Darwin Sailing Club recommends that OTB boats (Div. 5, 6, 7 and 8) carry a waterproof VHF radio capable of receiving and transmitting on VHF Ch. 73 and that this radio be turned on for the duration of the event and until the boat has returned to shore, as well as a laminated chart of the competition course area.

Big Boats (Div. 1, 3, 4) are required to meet the safety requirements of the Special Regulations for Category 7. Competitors are reminded that Northern Territory boating regulations require, in some areas, equipment in excess of the Australian Sailing Special Regulations.

#### Sign On

OTB entrants must sign on prior to leaving the shore and sign off immediately after returning to shore after the race.

Big Boats must sign on using VHF Ch. 73 20 minutes prior to the first scheduled start time. Please advise the boat name and number of people on board.

Any boat who withdraws during the race must advise the race committee or safety boat at the first opportunity, by hail or by VHS CH 73.

#### Courses:

**Start:** The start will be a line between an orange cylindrical 'pin' buoy and the mast of the committee start boat, identified by an orange flag, in the vicinity of D Buoy.

**Finish:** The finish will be a line between a black and white buoy and the mast of the committee boat, identified by a blue flag, in the start vicinity.

All marks of the course are rounding marks.

Div. 1 & 3: Start, E(s), O(s), Old Man Rock(p), 6(p), E(s), Finish

Div. 4: Start, E(s), O(s), Old Man Rock(p), O(p), ~~E(s)~~, Finish

Div. 5 & 8: Start, E(s), O(s), Old Man Rock(p), O(p), ~~E(s)~~, Finish

*(This changes the course in the DSC Yearbook for Div. 4, 5 and 8)*

Div. 7: Start, E(s), O(s), Old Man Rock(p), 6(p), E(s), Finish

Div. 6: Start, E(s), 'a'(s) Finish *(This changes the course in the DSC Yearbook for Div. 6)*

# 2020 Garmin/ Navcom CLASSIC SERIES

## OLD MAN ROCK

### Starting Sequence:

The starting sequence will be as follows:

First start

5 minutes before start: Divisional flag raised Warning signal

4 Minutes before start: P flag raised, Sound signal

1 Minute before start: P flag lowered Sound signal

Start: Divisional flag lowered, Sound signal

Subsequent starts will be as per above with a five-minute sequence with the divisional flag raised as the warning signal at the start of the previous division.

### Warning Signals:

Div.1 & 4	Numeral Pennant 1
Div. 3	Numeral Pennant 3
Div. 5	Numeral Pennant 5
Div. 7 & 8	Numeral Pennant 7
Div. 6	Minnow Flag

Note: In the case of no starters in a division no start will be provided.

### Description of the buoy

O Buoy is a yellow Special Purpose Buoy, approximately S12°24.300'S E130°48.250'

E Buoy is a yellow Special Purpose Buoy, approximately S12°25.560' E130°48.800'

Old Man Rock will be an orange cylindrical buoy, approximately S12°20.600' E130°50.800'

N°6 Buoy is a Red Channel Marker, approximately S12°25.150' E130°46.850'

D buoy will be a yellow cylindrical buoy, approximately S12°26.100' E130°49.200'

'a' will be an orange cylindrical buoy with a white stripe in the vicinity of the Fannie Bay moorings

### Additional Information

Presentation, with refreshments, will occur at the Darwin Sailing Club at 1800hrs.

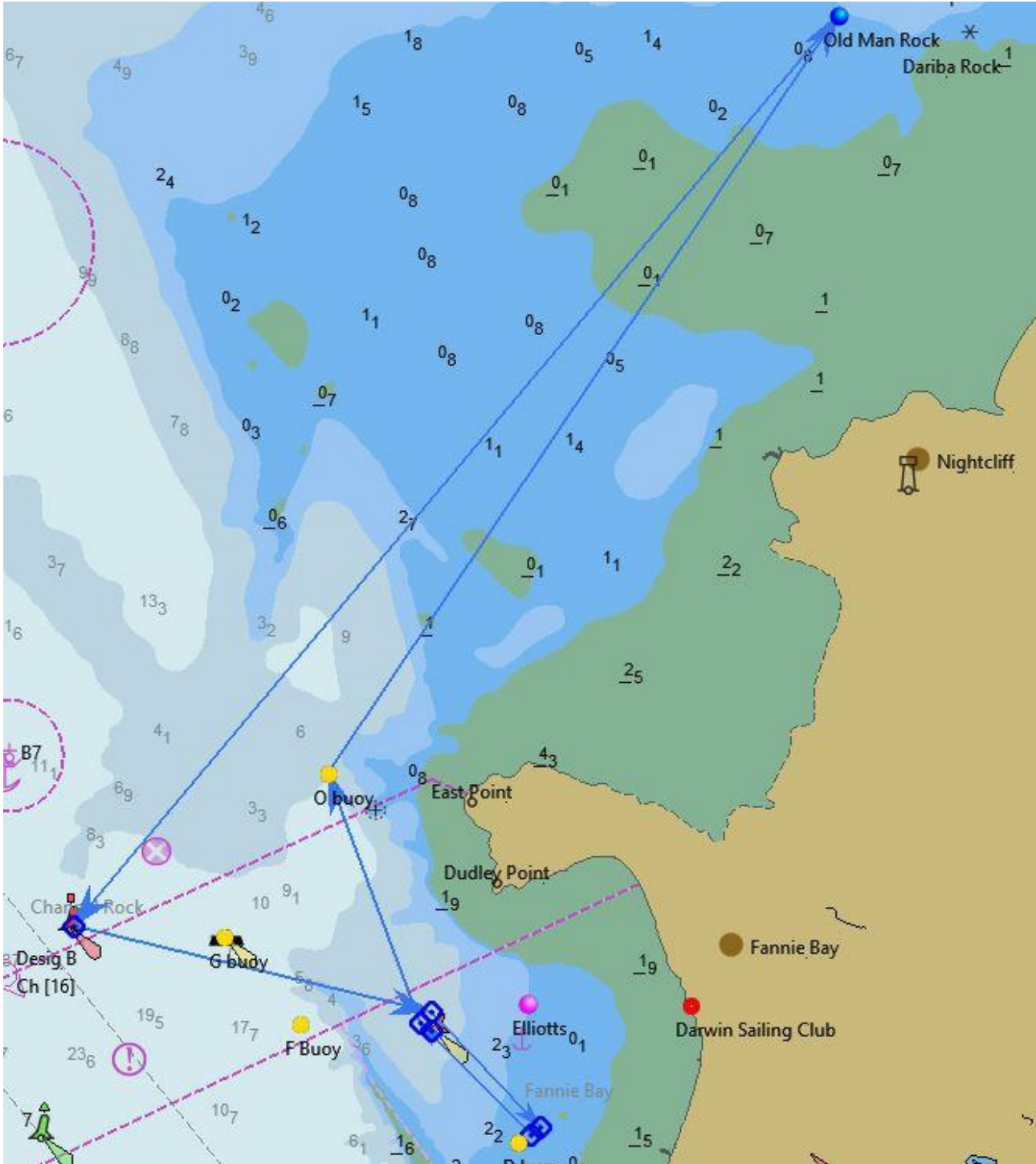
Curry Night: The Saumlaki Committee is conducting a Curry Night in conjunction with presentation. \$15 meal. Cash only.

The Garmin/ Navcom \$1000 prize is open to entrants from all divisions who meet the criteria as published on the noticeboard and in the Cyber Spinnaker 21-05-20. These can also be found at <https://dwnsail.com.au/sailing/race-documents/>

# 2020 Garmin/ Navcom CLASSIC SERIES

## OLD MAN ROCK

Division 1, 3 and 7 Course



# 2020 Garmin/ Navcom CLASSIC SERIES

## OLD MAN ROCK

Division 4, and 5 Course

